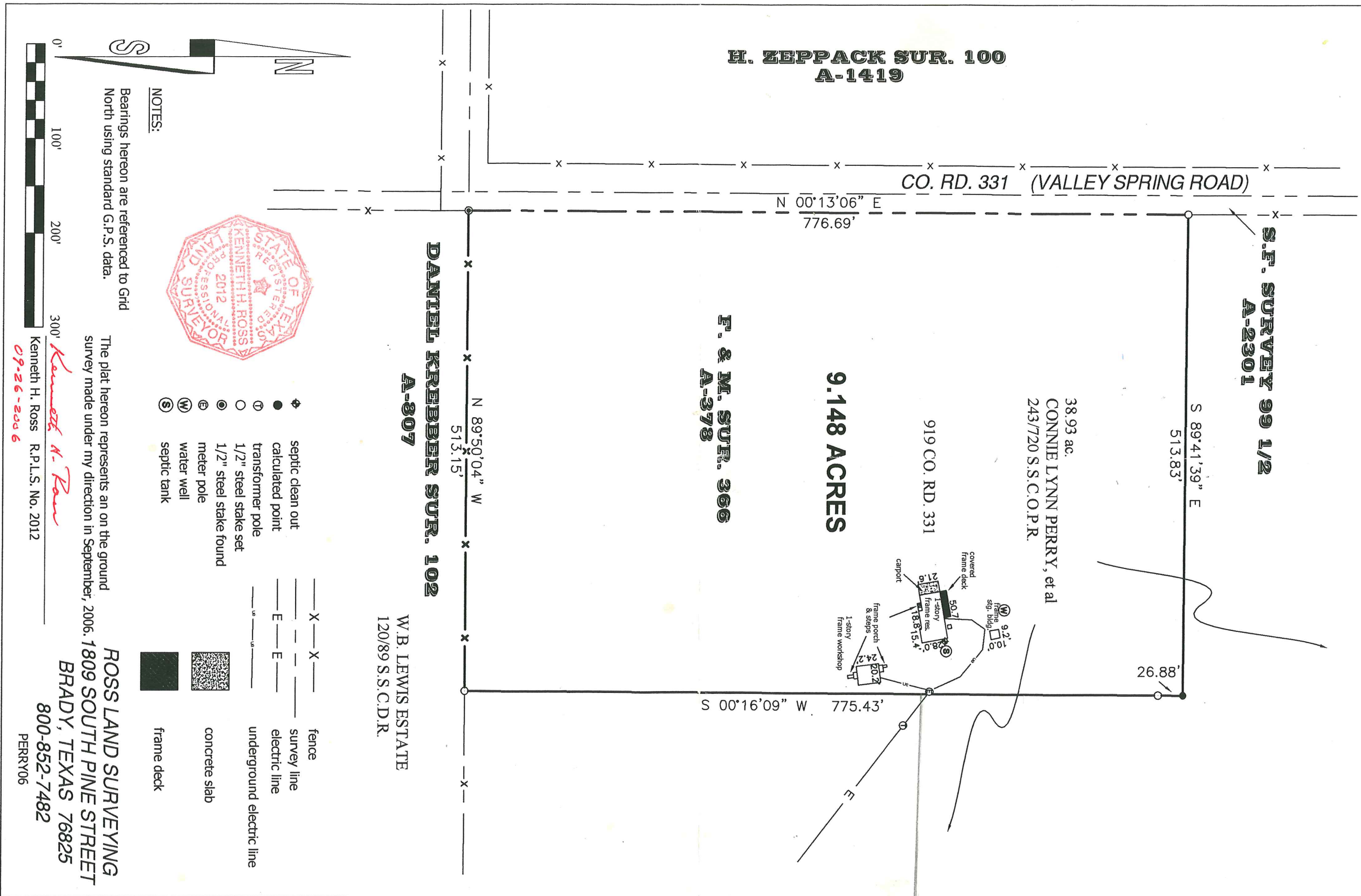
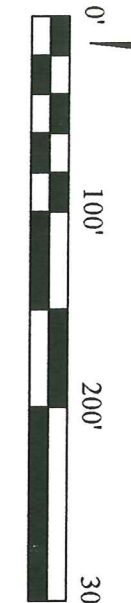


**PLAT SHOWING A SURVEY & LOCATION OF IMPROVEMENTS ON
9.148 ACRES @ 919 C.R. 331, CHEROKEE, SAN SABA CO., TEXAS**



- NOTES:**
- Bearings hereon are referenced to Grid
North using standard G.P.S. data.
- ◆ septic clean out
 - calculated point
 - Ⓣ transformer pole
 - 1/2" steel stake set
 - ⊙ 1/2" steel stake found
 - ⓔ meter pole
 - Ⓜ water well
 - Ⓢ septic tank

- X—X— fence
- — — survey line
- E—E— electric line
- — — underground electric line
- ▒ concrete slab
- frame deck



The plat hereon represents an on the ground survey made under my direction in September, 2006. 1809 SOUTH PINE STREET
ROSS LAND SURVEYING
BRADY, TEXAS 76825
 800-852-7482
 PERRY06

Kenneth H. Ross
 Kenneth H. Ross R.P.L.S. No. 2012
 09-26-2006