

# Gillespie CAD

Property Search Results > 25063 TAYLOR, RHONDA LOUISE ETAL for Tax Year: {2020  
Year 2020

## Property

### Account

Property ID: 25063 Legal Description: ABS A1007 J TATSCH #281, 51.465 ACRES  
 Geographic ID: A1007-0281-000000-00 Zoning:  
 Type: Real Agent Code:  
 Property Use Code:  
 Property Use Description:

### Location

Address: 6398 OLD SAN ANTONIO RD Mapsco:  
 OFF E US HWY 290, TX  
 Neighborhood: FBG 290 EAST & SE Map ID: 11-O  
 Neighborhood CD: F600

### Owner

Name: TAYLOR, RHONDA LOUISE ETAL Owner ID: 218733  
 Mailing Address: 621 ROCK CREEK LP % Ownership: 100.0000000000%  
 KERRVILLE, TX 78028  
 Exemptions:

## Values

(+) Improvement Homesite Value:	+	\$0	
(+) Improvement Non-Homesite Value:	+	\$0	
(+) Land Homesite Value:	+	\$0	
(+) Land Non-Homesite Value:	+	\$0	Ag / Timber Use Value
(+) Agricultural Market Valuation:	+	\$567,570	\$4,200
(+) Timber Market Valuation:	+	\$0	\$0
-----			
(=) Market Value:	=	\$567,570	
(-) Ag or Timber Use Value Reduction:	-	\$563,370	
-----			
(=) Appraised Value:	=	\$4,200	
(-) HS Cap:	-	\$0	
-----			
(=) Assessed Value:	=	\$4,200	

## Taxing Jurisdiction

Owner: TAYLOR, RHONDA LOUISE ETAL  
 % Ownership: 100.0000000000%  
 Total Value: \$567,570

Entity	Description	Tax Rate	Appraised Value	Taxable Value	Estimated Tax
CAD	GILLESPIE CENTRAL APPRAISAL DISTRICT	0.000000	\$4,200	\$4,200	\$0.00
G086	GILLESPIE COUNTY	0.412500	\$4,200	\$4,200	\$17.32
HUW	HILL CNTRY UWCD	0.006200	\$4,200	\$4,200	\$0.26
SFB	FREDBG ISD	1.076200	\$4,200	\$4,200	\$45.20
WCD	GILLESPIE WCID	0.000200	\$4,200	\$4,200	\$0.01
Total Tax Rate:		1.495100			

Taxes w/Current Exemptions:	\$62.79
Taxes w/o Exemptions:	\$62.79

**Improvement / Building**

No improvements exist for this property.

**Land**

#	Type	Description	Acres	Sqft	Eff Front	Eff Depth	Market Value	Prod. Value
1	RN1	NATIVE PASTURE 1	30.0000	1306800.00	0.00	0.00	\$330,850	\$2,500
2	RN2	NATIVE PASTURE 2	21.4650	935015.40	0.00	0.00	\$236,720	\$1,700

**Roll Value History**

Year	Improvements	Land Market	Ag Valuation	Appraised	HS Cap	Assessed
2020	\$0	\$567,570	4,200	4,200	\$0	\$4,200
2019	\$0	\$567,570	4,200	4,200	\$0	\$4,200
2018	\$0	\$511,190	3,970	3,970	\$0	\$3,970
2017	\$0	\$511,190	3,910	3,910	\$0	\$3,910
2016	\$0	\$373,120	3,900	3,900	\$0	\$3,900
2015	\$27,500	\$375,060	4,060	31,560	\$0	\$31,560
2014	\$27,500	\$375,060	3,970	31,470	\$0	\$31,470
2013	\$27,500	\$375,060	3,710	31,210	\$0	\$31,210
2012	\$27,500	\$359,940	3,560	31,060	\$0	\$31,060
2011	\$27,500	\$359,940	3,460	30,960	\$0	\$30,960
2010	\$27,500	\$385,660	3,460	30,960	\$0	\$30,960
2009	\$27,500	\$411,360	3,460	30,960	\$0	\$30,960
2008	\$27,500	\$412,700	3,460	30,960	\$0	\$30,960
2007	\$27,500	\$334,240	3,460	30,960	\$0	\$30,960
2006	\$27,500	\$257,100	3,460	30,960	\$0	\$30,960

**Deed History - (Last 3 Deed Transactions)**

#	Deed Date	Type	Description	Grantor	Grantee	Volume	Page	Deed Number
1	7/20/2011	PROBATE		TAYLOR, RHONDA LOUISE & TINLEY, ELIZABETH ANN	TAYLOR, RHONDA LOUISE ETAL	20131948		
2	6/20/2007	PD	PARTITION DEED	ROARICK, MARY E -LIFE ESTATE	TAYLOR, RHONDA LOUISE & TINLEY, ELIZABETH ANN	20073471		
3	2/17/2005	PROBATE		ROARICK, RAYMOND H	ROARICK, MARY E -LIFE ESTATE	588	201	0

**Tax Due**

Property Tax Information as of 05/12/2020

Amount Due If Paid on: -

Year	Taxing Jurisdiction	Taxable Value	Base Tax	Base Taxes Paid	Base Tax Due	Discount / Penalty & Interest	Attorney Fees	Amount Due
2019	GILLESPIE COUNTY	\$4,200	\$17.32	\$17.32	\$0.00	\$0.00	\$0.00	\$0.00

2019	HILL CNTRY UWCD	\$4,200	\$0.26	\$0.26	\$0.00	\$0.00	\$0.00	\$0.00
2019	FREDBG ISD	\$4,200	\$45.20	\$45.20	\$0.00	\$0.00	\$0.00	\$0.00
2019	GILLESPIE WCID	\$4,200	\$0.01	\$0.01	\$0.00	\$0.00	\$0.00	\$0.00
<b>2019 TOTAL:</b>			<b>\$62.79</b>	<b>\$62.79</b>	<b>\$0.00</b>	<b>\$0.00</b>	<b>\$0.00</b>	<b>\$0.00</b>
2018	GILLESPIE COUNTY	\$3,970	\$16.21	\$16.21	\$0.00	\$0.00	\$0.00	\$0.00
2018	HILL CNTRY UWCD	\$3,970	\$0.27	\$0.27	\$0.00	\$0.00	\$0.00	\$0.00
2018	FREDBG ISD	\$3,970	\$45.51	\$45.51	\$0.00	\$0.00	\$0.00	\$0.00
2018	GILLESPIE WCID	\$3,970	\$0.01	\$0.01	\$0.00	\$0.00	\$0.00	\$0.00
<b>2018 TOTAL:</b>			<b>\$62.00</b>	<b>\$62.00</b>	<b>\$0.00</b>	<b>\$0.00</b>	<b>\$0.00</b>	<b>\$0.00</b>
2017	GILLESPIE COUNTY	\$3,910	\$15.63	\$15.63	\$0.00	\$0.00	\$0.00	\$0.00
2017	HILL CNTRY UWCD	\$3,910	\$0.28	\$0.28	\$0.00	\$0.00	\$0.00	\$0.00
2017	FREDBG ISD	\$3,910	\$44.81	\$44.81	\$0.00	\$0.00	\$0.00	\$0.00
2017	GILLESPIE WCID	\$3,910	\$0.01	\$0.01	\$0.00	\$0.00	\$0.00	\$0.00
<b>2017 TOTAL:</b>			<b>\$60.73</b>	<b>\$60.73</b>	<b>\$0.00</b>	<b>\$0.00</b>	<b>\$0.00</b>	<b>\$0.00</b>
2016	GILLESPIE COUNTY	\$3,900	\$16.94	\$16.94	\$0.00	\$0.00	\$0.00	\$0.00
2016	HILL CNTRY UWCD	\$3,900	\$0.30	\$0.30	\$0.00	\$0.00	\$0.00	\$0.00
2016	FREDBG ISD	\$3,900	\$44.70	\$44.70	\$0.00	\$0.00	\$0.00	\$0.00
2016	GILLESPIE WCID	\$3,900	\$0.01	\$0.01	\$0.00	\$0.00	\$0.00	\$0.00
<b>2016 TOTAL:</b>			<b>\$61.95</b>	<b>\$61.95</b>	<b>\$0.00</b>	<b>\$0.00</b>	<b>\$0.00</b>	<b>\$0.00</b>
2015	GILLESPIE COUNTY	\$31,560	\$130.88	\$130.88	\$0.00	\$0.00	\$0.00	\$0.00
2015	HILL CNTRY UWCD	\$31,560	\$2.46	\$2.46	\$0.00	\$0.00	\$0.00	\$0.00
2015	FREDBG ISD	\$31,560	\$361.74	\$361.74	\$0.00	\$0.00	\$0.00	\$0.00
2015	GILLESPIE WCID	\$31,560	\$0.06	\$0.06	\$0.00	\$0.00	\$0.00	\$0.00
<b>2015 TOTAL:</b>			<b>\$495.14</b>	<b>\$495.14</b>	<b>\$0.00</b>	<b>\$0.00</b>	<b>\$0.00</b>	<b>\$0.00</b>
2014	GILLESPIE COUNTY	\$31,470	\$124.97	\$124.97	\$0.00	\$0.00	\$0.00	\$0.00
2014	HILL CNTRY UWCD	\$31,470	\$2.67	\$2.67	\$0.00	\$0.00	\$0.00	\$0.00
2014	FREDBG ISD	\$31,470	\$360.71	\$360.71	\$0.00	\$0.00	\$0.00	\$0.00
2014	GILLESPIE WCID	\$31,470	\$0.06	\$0.06	\$0.00	\$0.00	\$0.00	\$0.00
<b>2014 TOTAL:</b>			<b>\$488.41</b>	<b>\$488.41</b>	<b>\$0.00</b>	<b>\$0.00</b>	<b>\$0.00</b>	<b>\$0.00</b>
2013	GILLESPIE COUNTY	\$31,210	\$118.75	\$118.75	\$0.00	\$0.00	\$0.00	\$0.00
2013	HILL CNTRY UWCD	\$31,210	\$2.50	\$2.50	\$0.00	\$0.00	\$0.00	\$0.00
2013	FREDBG ISD	\$31,210	\$357.73	\$357.73	\$0.00	\$0.00	\$0.00	\$0.00
2013	GILLESPIE WCID	\$31,210	\$0.06	\$0.06	\$0.00	\$0.00	\$0.00	\$0.00
<b>2013 TOTAL:</b>			<b>\$479.04</b>	<b>\$479.04</b>	<b>\$0.00</b>	<b>\$0.00</b>	<b>\$0.00</b>	<b>\$0.00</b>
<b>TAYLOR, RHONDA LOUISE ETAL TOTAL:</b>			<b>\$1710.06</b>	<b>\$1710.06</b>	<b>\$0.00</b>	<b>\$0.00</b>	<b>\$0.00</b>	<b>\$0.00</b>
2012	GILLESPIE COUNTY	\$31,060	\$96.32	\$96.32	\$0.00	\$0.00	\$0.00	\$0.00
2012	HILL CNTRY UWCD	\$31,060	\$2.33	\$2.33	\$0.00	\$0.00	\$0.00	\$0.00
2012	FREDBG ISD	\$31,060	\$356.01	\$356.01	\$0.00	\$0.00	\$0.00	\$0.00
2012	GILLESPIE WCID	\$31,060	\$0.03	\$0.03	\$0.00	\$0.00	\$0.00	\$0.00
<b>2012 TOTAL:</b>			<b>\$454.69</b>	<b>\$454.69</b>	<b>\$0.00</b>	<b>\$0.00</b>	<b>\$0.00</b>	<b>\$0.00</b>
2011	GILLESPIE COUNTY	\$30,960	\$86.38	\$86.38	\$0.00	\$0.00	\$0.00	\$0.00
2011	HILL CNTRY UWCD	\$30,960	\$2.23	\$2.23	\$0.00	\$0.00	\$0.00	\$0.00
2011	FREDBG ISD	\$30,960	\$354.86	\$354.86	\$0.00	\$0.00	\$0.00	\$0.00
2011	GILLESPIE WCID	\$30,960	\$0.03	\$0.03	\$0.00	\$0.00	\$0.00	\$0.00
<b>2011 TOTAL:</b>			<b>\$443.50</b>	<b>\$443.50</b>	<b>\$0.00</b>	<b>\$0.00</b>	<b>\$0.00</b>	<b>\$0.00</b>
2010	GILLESPIE COUNTY	\$30,960	\$81.15	\$81.15	\$0.00	\$0.00	\$0.00	\$0.00
2010	HILL CNTRY UWCD	\$30,960	\$2.17	\$2.17	\$0.00	\$0.00	\$0.00	\$0.00
2010	FREDBG ISD	\$30,960	\$354.86	\$354.86	\$0.00	\$0.00	\$0.00	\$0.00
2010	GILLESPIE WCID	\$30,960	\$0.03	\$0.03	\$0.00	\$0.00	\$0.00	\$0.00
<b>2010 TOTAL:</b>			<b>\$438.21</b>	<b>\$438.21</b>	<b>\$0.00</b>	<b>\$0.00</b>	<b>\$0.00</b>	<b>\$0.00</b>
2009	GILLESPIE COUNTY	\$30,960	\$79.81	\$79.81	\$0.00	\$0.00	\$0.00	\$0.00
2009	HILL CNTRY UWCD	\$30,960	\$2.11	\$2.11	\$0.00	\$0.00	\$0.00	\$0.00
2009	FREDBG ISD	\$30,960	\$354.86	\$354.86	\$0.00	\$0.00	\$0.00	\$0.00
2009	GILLESPIE WCID	\$30,960	\$0.03	\$0.03	\$0.00	\$0.00	\$0.00	\$0.00
<b>2009 TOTAL:</b>			<b>\$436.81</b>	<b>\$436.81</b>	<b>\$0.00</b>	<b>\$0.00</b>	<b>\$0.00</b>	<b>\$0.00</b>
2008	GILLESPIE COUNTY	\$30,960	\$79.91	\$79.91	\$0.00	\$0.00	\$0.00	\$0.00

2008	HILL CNTRY UWCD	\$30,960	\$2.11	\$2.11	\$0.00	\$0.00	\$0.00	\$0.00
2008	FREDBG ISD	\$30,960	\$354.86	\$354.86	\$0.00	\$0.00	\$0.00	\$0.00
2008	GILLESPIE WCID	\$30,960	\$0.03	\$0.03	\$0.00	\$0.00	\$0.00	\$0.00
	<b>2008 TOTAL:</b>		<b>\$436.91</b>	<b>\$436.91</b>	<b>\$0.00</b>	<b>\$0.00</b>	<b>\$0.00</b>	<b>\$0.00</b>
2007	GILLESPIE COUNTY	\$30,960	\$85.76	\$85.76	\$0.00	\$0.00	\$0.00	\$0.00
2007	HILL CNTRY UWCD	\$30,960	\$2.17	\$2.17	\$0.00	\$0.00	\$0.00	\$0.00
2007	FREDBG ISD	\$30,960	\$354.86	\$354.86	\$0.00	\$0.00	\$0.00	\$0.00
2007	GILLESPIE WCID	\$30,960	\$0.03	\$0.03	\$0.00	\$0.00	\$0.00	\$0.00
	<b>2007 TOTAL:</b>		<b>\$442.82</b>	<b>\$442.82</b>	<b>\$0.00</b>	<b>\$0.00</b>	<b>\$0.00</b>	<b>\$0.00</b>
2006	GILLESPIE COUNTY	\$30,960	\$92.14	\$92.14	\$0.00	\$0.00	\$0.00	\$0.00
2006	HILL CNTRY UWCD	\$30,960	\$2.41	\$2.41	\$0.00	\$0.00	\$0.00	\$0.00
2006	FREDBG ISD	\$30,960	\$445.33	\$445.33	\$0.00	\$0.00	\$0.00	\$0.00
2006	GILLESPIE WCID	\$30,960	\$0.03	\$0.03	\$0.00	\$0.00	\$0.00	\$0.00
	<b>2006 TOTAL:</b>		<b>\$539.91</b>	<b>\$539.91</b>	<b>\$0.00</b>	<b>\$0.00</b>	<b>\$0.00</b>	<b>\$0.00</b>
2005	GILLESPIE COUNTY	\$30,960	\$94.46	\$94.46	\$0.00	\$0.00	\$0.00	\$0.00
2005	HILL CNTRY UWCD	\$30,960	\$2.57	\$2.57	\$0.00	\$0.00	\$0.00	\$0.00
2005	FREDBG ISD	\$30,960	\$492.26	\$492.26	\$0.00	\$0.00	\$0.00	\$0.00
2005	GILLESPIE WCID	\$30,960	\$0.03	\$0.03	\$0.00	\$0.00	\$0.00	\$0.00
	<b>2005 TOTAL:</b>		<b>\$589.32</b>	<b>\$589.32</b>	<b>\$0.00</b>	<b>\$0.00</b>	<b>\$0.00</b>	<b>\$0.00</b>
2004	GILLESPIE COUNTY	\$9,120	\$28.84	\$28.84	\$0.00	\$0.00	\$0.00	\$0.00
2004	HILL CNTRY UWCD	\$9,120	\$0.76	\$0.76	\$0.00	\$0.00	\$0.00	\$0.00
2004	FREDBG ISD	\$9,120	\$144.66	\$144.66	\$0.00	\$0.00	\$0.00	\$0.00
2004	GILLESPIE WCID	\$9,120	\$0.01	\$0.01	\$0.00	\$0.00	\$0.00	\$0.00
	<b>2004 TOTAL:</b>		<b>\$174.27</b>	<b>\$174.27</b>	<b>\$0.00</b>	<b>\$0.00</b>	<b>\$0.00</b>	<b>\$0.00</b>
	<b>ROARICK, MARY E -LIFE ESTATE TOTAL:</b>		<b>\$1746.32</b>	<b>\$1746.32</b>	<b>\$0.00</b>	<b>\$0.00</b>	<b>\$0.00</b>	<b>\$0.00</b>
	<b>TAYLOR, RHONDA LOUISE &amp; TINLEY, ELIZABETH ANN TOTAL:</b>		<b>\$2210.12</b>	<b>\$2210.12</b>	<b>\$0.00</b>	<b>\$0.00</b>	<b>\$0.00</b>	<b>\$0.00</b>
	<b>GRAND TOTAL (ALL OWNERS):</b>		<b>\$5666.50</b>	<b>\$5666.50</b>	<b>\$0.00</b>	<b>\$0.00</b>	<b>\$0.00</b>	<b>\$0.00</b>

NOTE: Penalty & Interest accrues every month on the unpaid tax and is added to the balance. Attorney fees may also increase your tax liability if not paid by July 1. If you plan to submit payment on a future date, make sure you enter the date and RECALCULATE to obtain the correct total amount due.

For Appraisal related questions please call (830) 997-9807.

For Tax related questions please call (830) 997-9809.

[Click here to be taken to the Gillespie Tax Property Search to find TAXES DUE.](#)

# Gillespie CAD

Property Search Results > 25065 TAYLOR, RHONDA LOUISE ETAL for Tax Year: 2020  
Year 2020

## Property

### Account

Property ID: 25065      Legal Description: ABS A0280 J HAHNZOG #296, 3.252 ACRES  
 Geographic ID: A0280-0296-000000-00      Zoning: 516957  
 Type: Real      Agent Code:  
 Property Use Code:  
 Property Use Description:

### Location

Address: 6398 OLD SAN ANTONIO RD      Mapsco:  
 OFF E US HWY 290, TX  
 Neighborhood: FBG 290 EAST & SE      Map ID: 11-0  
 Neighborhood CD: F600

### Owner

Name: TAYLOR, RHONDA LOUISE ETAL      Owner ID: 218733  
 Mailing Address: 621 ROCK CREEK LP      % Ownership: 100.0000000000%  
 KERRVILLE, TX 78028  
 Exemptions:

## Values

(+) Improvement Homesite Value:	+	\$0	
(+) Improvement Non-Homesite Value:	+	\$0	
(+) Land Homesite Value:	+	\$0	
(+) Land Non-Homesite Value:	+	\$0	Ag / Timber Use Value
(+) Agricultural Market Valuation:	+	\$35,860	\$260
(+) Timber Market Valuation:	+	\$0	\$0
<hr/>			
(=) Market Value:	=	\$35,860	
(-) Ag or Timber Use Value Reduction:	-	\$35,600	
<hr/>			
(=) Appraised Value:	=	\$260	
(-) HS Cap:	-	\$0	
<hr/>			
(=) Assessed Value:	=	\$260	

## Taxing Jurisdiction

Owner: TAYLOR, RHONDA LOUISE ETAL  
 % Ownership: 100.0000000000%  
 Total Value: \$35,860

Entity	Description	Tax Rate	Appraised Value	Taxable Value	Estimated Tax
CAD	GILLESPIE CENTRAL APPRAISAL DISTRICT	0.000000	\$260	\$260	\$0.00
G086	GILLESPIE COUNTY	0.412500	\$260	\$260	\$1.08
HUW	HILL CNTRY UWCD	0.006200	\$260	\$260	\$0.02
SFB	FREDBG ISD	1.076200	\$260	\$260	\$2.80
WCD	GILLESPIE WCID	0.000200	\$260	\$260	\$0.00
Total Tax Rate:		1.495100			

Taxes w/Current Exemptions:	\$3.90
Taxes w/o Exemptions:	\$3.89

**Improvement / Building**

No improvements exist for this property.

**Land**

#	Type	Description	Acres	Sqft	Eff Front	Eff Depth	Market Value	Prod. Value
1	RN2	NATIVE PASTURE 2	3.2520	141657.12	0.00	0.00	\$35,860	\$260

**Roll Value History**

Year	Improvements	Land Market	Ag Valuation	Appraised	HS Cap	Assessed
2020	\$0	\$35,860	260	260	\$0	\$260
2019	\$0	\$35,860	260	260	\$0	\$260
2018	\$0	\$32,300	240	240	\$0	\$240
2017	\$0	\$32,300	240	240	\$0	\$240
2016	\$0	\$23,580	240	240	\$0	\$240
2015	\$0	\$659,750	7,080	7,080	\$0	\$7,080
2014	\$0	\$659,750	6,910	6,910	\$0	\$6,910
2013	\$0	\$659,750	6,500	6,500	\$0	\$6,500
2012	\$0	\$659,750	6,500	6,500	\$0	\$6,500
2011	\$0	\$659,750	6,310	6,310	\$0	\$6,310
2010	\$0	\$706,880	6,310	6,310	\$0	\$6,310
2009	\$0	\$754,000	6,310	6,310	\$0	\$6,310
2008	\$0	\$756,450	6,310	6,310	\$0	\$6,310
2007	\$0	\$612,630	6,310	6,310	\$0	\$6,310
2006	\$0	\$471,250	6,310	6,310	\$0	\$6,310

**Deed History - (Last 3 Deed Transactions)**

#	Deed Date	Type	Description	Grantor	Grantee	Volume	Page	Deed Number
1	7/20/2011	PROBATE		TAYLOR, RHONDA LOUISE & TINLEY, ELIZABETH ANN	TAYLOR, RHONDA LOUISE ETAL	20131948		
2	6/20/2007	PD	PARTITION DEED	ROARICK, RAYMOND H DISCLAIMER TRUST	TAYLOR, RHONDA LOUISE & TINLEY, ELIZABETH ANN	20073471		
3	2/17/2004	ED		ROARICK, RAYMOND H	ROARICK, RAYMOND H DISCLAIMER TRUST	588	201	0

**Tax Due**

Property Tax Information as of 05/12/2020

Amount Due If Paid on: -

Year	Taxing Jurisdiction	Taxable Value	Base Tax	Base Taxes Paid	Base Tax Due	Discount / Penalty & Interest	Attorney Fees	Amount Due
2019	GILLESPIE COUNTY	\$260	\$1.08	\$1.08	\$0.00	\$0.00	\$0.00	\$0.00

2019	HILL CNTRY UWCD	\$260	\$0.02	\$0.02	\$0.00	\$0.00	\$0.00	\$0.00
2019	FREDBG ISD	\$260	\$2.80	\$2.80	\$0.00	\$0.00	\$0.00	\$0.00
2019	GILLESPIE WCID	\$260	\$0.00	\$0.00	\$0.00	\$0.00	\$0.00	\$0.00
	<b>2019 TOTAL:</b>		<b>\$3.90</b>	<b>\$3.90</b>	<b>\$0.00</b>	<b>\$0.00</b>	<b>\$0.00</b>	<b>\$0.00</b>
2018	GILLESPIE COUNTY	\$240	\$0.98	\$0.98	\$0.00	\$0.00	\$0.00	\$0.00
2018	HILL CNTRY UWCD	\$240	\$0.02	\$0.02	\$0.00	\$0.00	\$0.00	\$0.00
2018	FREDBG ISD	\$240	\$2.75	\$2.75	\$0.00	\$0.00	\$0.00	\$0.00
2018	GILLESPIE WCID	\$240	\$0.00	\$0.00	\$0.00	\$0.00	\$0.00	\$0.00
	<b>2018 TOTAL:</b>		<b>\$3.75</b>	<b>\$3.75</b>	<b>\$0.00</b>	<b>\$0.00</b>	<b>\$0.00</b>	<b>\$0.00</b>
2017	GILLESPIE COUNTY	\$240	\$0.96	\$0.96	\$0.00	\$0.00	\$0.00	\$0.00
2017	HILL CNTRY UWCD	\$240	\$0.02	\$0.02	\$0.00	\$0.00	\$0.00	\$0.00
2017	FREDBG ISD	\$240	\$2.75	\$2.75	\$0.00	\$0.00	\$0.00	\$0.00
2017	GILLESPIE WCID	\$240	\$0.00	\$0.00	\$0.00	\$0.00	\$0.00	\$0.00
	<b>2017 TOTAL:</b>		<b>\$3.73</b>	<b>\$3.73</b>	<b>\$0.00</b>	<b>\$0.00</b>	<b>\$0.00</b>	<b>\$0.00</b>
2016	GILLESPIE COUNTY	\$240	\$1.04	\$1.04	\$0.00	\$0.00	\$0.00	\$0.00
2016	HILL CNTRY UWCD	\$240	\$0.02	\$0.02	\$0.00	\$0.00	\$0.00	\$0.00
2016	FREDBG ISD	\$240	\$2.75	\$2.75	\$0.00	\$0.00	\$0.00	\$0.00
2016	GILLESPIE WCID	\$240	\$0.00	\$0.00	\$0.00	\$0.00	\$0.00	\$0.00
	<b>2016 TOTAL:</b>		<b>\$3.81</b>	<b>\$3.81</b>	<b>\$0.00</b>	<b>\$0.00</b>	<b>\$0.00</b>	<b>\$0.00</b>
2015	GILLESPIE COUNTY	\$7,080	\$29.36	\$29.36	\$0.00	\$0.00	\$0.00	\$0.00
2015	HILL CNTRY UWCD	\$7,080	\$0.55	\$0.55	\$0.00	\$0.00	\$0.00	\$0.00
2015	FREDBG ISD	\$7,080	\$81.15	\$81.15	\$0.00	\$0.00	\$0.00	\$0.00
2015	GILLESPIE WCID	\$7,080	\$0.01	\$0.01	\$0.00	\$0.00	\$0.00	\$0.00
	<b>2015 TOTAL:</b>		<b>\$111.07</b>	<b>\$111.07</b>	<b>\$0.00</b>	<b>\$0.00</b>	<b>\$0.00</b>	<b>\$0.00</b>
2014	GILLESPIE COUNTY	\$6,910	\$27.44	\$27.44	\$0.00	\$0.00	\$0.00	\$0.00
2014	HILL CNTRY UWCD	\$6,910	\$0.59	\$0.59	\$0.00	\$0.00	\$0.00	\$0.00
2014	FREDBG ISD	\$6,910	\$79.20	\$79.20	\$0.00	\$0.00	\$0.00	\$0.00
2014	GILLESPIE WCID	\$6,910	\$0.01	\$0.01	\$0.00	\$0.00	\$0.00	\$0.00
	<b>2014 TOTAL:</b>		<b>\$107.24</b>	<b>\$107.24</b>	<b>\$0.00</b>	<b>\$0.00</b>	<b>\$0.00</b>	<b>\$0.00</b>
2013	GILLESPIE COUNTY	\$6,500	\$24.73	\$24.73	\$0.00	\$0.00	\$0.00	\$0.00
2013	HILL CNTRY UWCD	\$6,500	\$0.52	\$0.52	\$0.00	\$0.00	\$0.00	\$0.00
2013	FREDBG ISD	\$6,500	\$74.50	\$74.50	\$0.00	\$0.00	\$0.00	\$0.00
2013	GILLESPIE WCID	\$6,500	\$0.01	\$0.01	\$0.00	\$0.00	\$0.00	\$0.00
	<b>2013 TOTAL:</b>		<b>\$99.76</b>	<b>\$99.76</b>	<b>\$0.00</b>	<b>\$0.00</b>	<b>\$0.00</b>	<b>\$0.00</b>
	<b>TAYLOR, RHONDA LOUISE ETAL TOTAL:</b>		<b>\$333.26</b>	<b>\$333.26</b>	<b>\$0.00</b>	<b>\$0.00</b>	<b>\$0.00</b>	<b>\$0.00</b>
2012	GILLESPIE COUNTY	\$6,500	\$20.15	\$20.15	\$0.00	\$0.00	\$0.00	\$0.00
2012	HILL CNTRY UWCD	\$6,500	\$0.49	\$0.49	\$0.00	\$0.00	\$0.00	\$0.00
2012	FREDBG ISD	\$6,500	\$74.50	\$74.50	\$0.00	\$0.00	\$0.00	\$0.00
2012	GILLESPIE WCID	\$6,500	\$0.01	\$0.01	\$0.00	\$0.00	\$0.00	\$0.00
	<b>2012 TOTAL:</b>		<b>\$95.15</b>	<b>\$95.15</b>	<b>\$0.00</b>	<b>\$0.00</b>	<b>\$0.00</b>	<b>\$0.00</b>
2011	GILLESPIE COUNTY	\$6,310	\$17.60	\$17.60	\$0.00	\$0.00	\$0.00	\$0.00
2011	HILL CNTRY UWCD	\$6,310	\$0.45	\$0.45	\$0.00	\$0.00	\$0.00	\$0.00
2011	FREDBG ISD	\$6,310	\$72.32	\$72.32	\$0.00	\$0.00	\$0.00	\$0.00
2011	GILLESPIE WCID	\$6,310	\$0.01	\$0.01	\$0.00	\$0.00	\$0.00	\$0.00
	<b>2011 TOTAL:</b>		<b>\$90.38</b>	<b>\$90.38</b>	<b>\$0.00</b>	<b>\$0.00</b>	<b>\$0.00</b>	<b>\$0.00</b>
2010	GILLESPIE COUNTY	\$6,310	\$16.54	\$16.54	\$0.00	\$0.00	\$0.00	\$0.00
2010	HILL CNTRY UWCD	\$6,310	\$0.44	\$0.44	\$0.00	\$0.00	\$0.00	\$0.00
2010	FREDBG ISD	\$6,310	\$72.32	\$72.32	\$0.00	\$0.00	\$0.00	\$0.00
2010	GILLESPIE WCID	\$6,310	\$0.01	\$0.01	\$0.00	\$0.00	\$0.00	\$0.00
	<b>2010 TOTAL:</b>		<b>\$89.31</b>	<b>\$89.31</b>	<b>\$0.00</b>	<b>\$0.00</b>	<b>\$0.00</b>	<b>\$0.00</b>
2009	GILLESPIE COUNTY	\$6,310	\$16.27	\$16.27	\$0.00	\$0.00	\$0.00	\$0.00
2009	HILL CNTRY UWCD	\$6,310	\$0.43	\$0.43	\$0.00	\$0.00	\$0.00	\$0.00
2009	FREDBG ISD	\$6,310	\$72.32	\$72.32	\$0.00	\$0.00	\$0.00	\$0.00
2009	GILLESPIE WCID	\$6,310	\$0.01	\$0.01	\$0.00	\$0.00	\$0.00	\$0.00
	<b>2009 TOTAL:</b>		<b>\$89.03</b>	<b>\$89.03</b>	<b>\$0.00</b>	<b>\$0.00</b>	<b>\$0.00</b>	<b>\$0.00</b>
2008	GILLESPIE COUNTY	\$6,310	\$16.28	\$16.28	\$0.00	\$0.00	\$0.00	\$0.00

2008	HILL CNTRY UWCD	\$6,310	\$0.43	\$0.43	\$0.00	\$0.00	\$0.00	\$0.00
2008	FREDBG ISD	\$6,310	\$72.32	\$72.32	\$0.00	\$0.00	\$0.00	\$0.00
2008	GILLESPIE WCID	\$6,310	\$0.01	\$0.01	\$0.00	\$0.00	\$0.00	\$0.00
	<b>2008 TOTAL:</b>		<b>\$89.04</b>	<b>\$89.04</b>	<b>\$0.00</b>	<b>\$0.00</b>	<b>\$0.00</b>	<b>\$0.00</b>
2007	GILLESPIE COUNTY	\$6,310	\$17.48	\$17.48	\$0.00	\$0.00	\$0.00	\$0.00
2007	HILL CNTRY UWCD	\$6,310	\$0.44	\$0.44	\$0.00	\$0.00	\$0.00	\$0.00
2007	FREDBG ISD	\$6,310	\$72.32	\$72.32	\$0.00	\$0.00	\$0.00	\$0.00
2007	GILLESPIE WCID	\$6,310	\$0.01	\$0.01	\$0.00	\$0.00	\$0.00	\$0.00
	<b>2007 TOTAL:</b>		<b>\$90.25</b>	<b>\$90.25</b>	<b>\$0.00</b>	<b>\$0.00</b>	<b>\$0.00</b>	<b>\$0.00</b>
2006	GILLESPIE COUNTY	\$6,310	\$18.78	\$18.78	\$0.00	\$0.00	\$0.00	\$0.00
2006	HILL CNTRY UWCD	\$6,310	\$0.49	\$0.49	\$0.00	\$0.00	\$0.00	\$0.00
2006	FREDBG ISD	\$6,310	\$90.76	\$90.76	\$0.00	\$0.00	\$0.00	\$0.00
2006	GILLESPIE WCID	\$6,310	\$0.01	\$0.01	\$0.00	\$0.00	\$0.00	\$0.00
	<b>2006 TOTAL:</b>		<b>\$110.04</b>	<b>\$110.04</b>	<b>\$0.00</b>	<b>\$0.00</b>	<b>\$0.00</b>	<b>\$0.00</b>
2005	GILLESPIE COUNTY	\$6,310	\$19.25	\$19.25	\$0.00	\$0.00	\$0.00	\$0.00
2005	HILL CNTRY UWCD	\$6,310	\$0.52	\$0.52	\$0.00	\$0.00	\$0.00	\$0.00
2005	FREDBG ISD	\$6,310	\$100.33	\$100.33	\$0.00	\$0.00	\$0.00	\$0.00
2005	GILLESPIE WCID	\$6,310	\$0.01	\$0.01	\$0.00	\$0.00	\$0.00	\$0.00
	<b>2005 TOTAL:</b>		<b>\$120.11</b>	<b>\$120.11</b>	<b>\$0.00</b>	<b>\$0.00</b>	<b>\$0.00</b>	<b>\$0.00</b>
2004	GILLESPIE COUNTY	\$6,310	\$19.95	\$19.95	\$0.00	\$0.00	\$0.00	\$0.00
2004	HILL CNTRY UWCD	\$6,310	\$0.52	\$0.52	\$0.00	\$0.00	\$0.00	\$0.00
2004	FREDBG ISD	\$6,310	\$100.09	\$100.09	\$0.00	\$0.00	\$0.00	\$0.00
2004	GILLESPIE WCID	\$6,310	\$0.01	\$0.01	\$0.00	\$0.00	\$0.00	\$0.00
	<b>2004 TOTAL:</b>		<b>\$120.57</b>	<b>\$120.57</b>	<b>\$0.00</b>	<b>\$0.00</b>	<b>\$0.00</b>	<b>\$0.00</b>
	<b>ROARICK, RAYMOND H DISCLAIMER TRUST TOTAL:</b>		<b>\$440.97</b>	<b>\$440.97</b>	<b>\$0.00</b>	<b>\$0.00</b>	<b>\$0.00</b>	<b>\$0.00</b>
	<b>TAYLOR, RHONDA LOUISE &amp; TINLEY, ELIZABETH ANN TOTAL:</b>		<b>\$452.91</b>	<b>\$452.91</b>	<b>\$0.00</b>	<b>\$0.00</b>	<b>\$0.00</b>	<b>\$0.00</b>
	<b>GRAND TOTAL (ALL OWNERS):</b>		<b>\$1227.14</b>	<b>\$1227.14</b>	<b>\$0.00</b>	<b>\$0.00</b>	<b>\$0.00</b>	<b>\$0.00</b>

NOTE: Penalty & Interest accrues every month on the unpaid tax and is added to the balance. Attorney fees may also increase your tax liability if not paid by July 1. If you plan to submit payment on a future date, make sure you enter the date and RECALCULATE to obtain the correct total amount due.

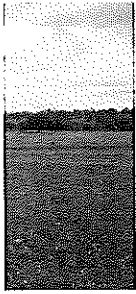
For Appraisal related questions please call (830) 997-9807.

For Tax related questions please call (830) 997-9809.

[Click here to be taken to the Gillespie Tax Property Search to find TAXES DUE.](#)



ve) List Price: \$999,953 0000 E Old San Antonio Rd Fredericksburg, TX 78624



Type: Farm Land, Productive Soils  
Best Use: Grazing, Residential, Orchard  
Topography: Sloping, Gently Rolling, Partially Wooded, Hill Top View  
Surface Cover: Wooded, Native Pasture, Wooded/Native Pasture, Abandoned Cropland  
Views: Yes  
Apx \$/Acre: 18275  
Lot/Tract #:

Original List Price: \$999,953  
Area: County-Southeast  
Subdivision: None  
County: Gillespie  
Schools: Fredericksburg S/D  
Distance From City: Less than 6 miles  
Property Size Range: 51-100 Acres  
Apx Tract Size: 54.717  
Apx Acreage:  
Seller's Est Tax: 65.73  
Showing Instructions: Call LA Appointment, No Sign, Gate Locked-Combo  
Days on Market 439

EMPT Appraisal District #: 25063 & 25065 Zoning: None  
Deed Restrictions: No Easements: Electric Distribution  
HOA Fees: HOA Fees Pd:

vey/Plat, Topographical Map, Legal Description, Aerial Photo, New Survey Lines Marked

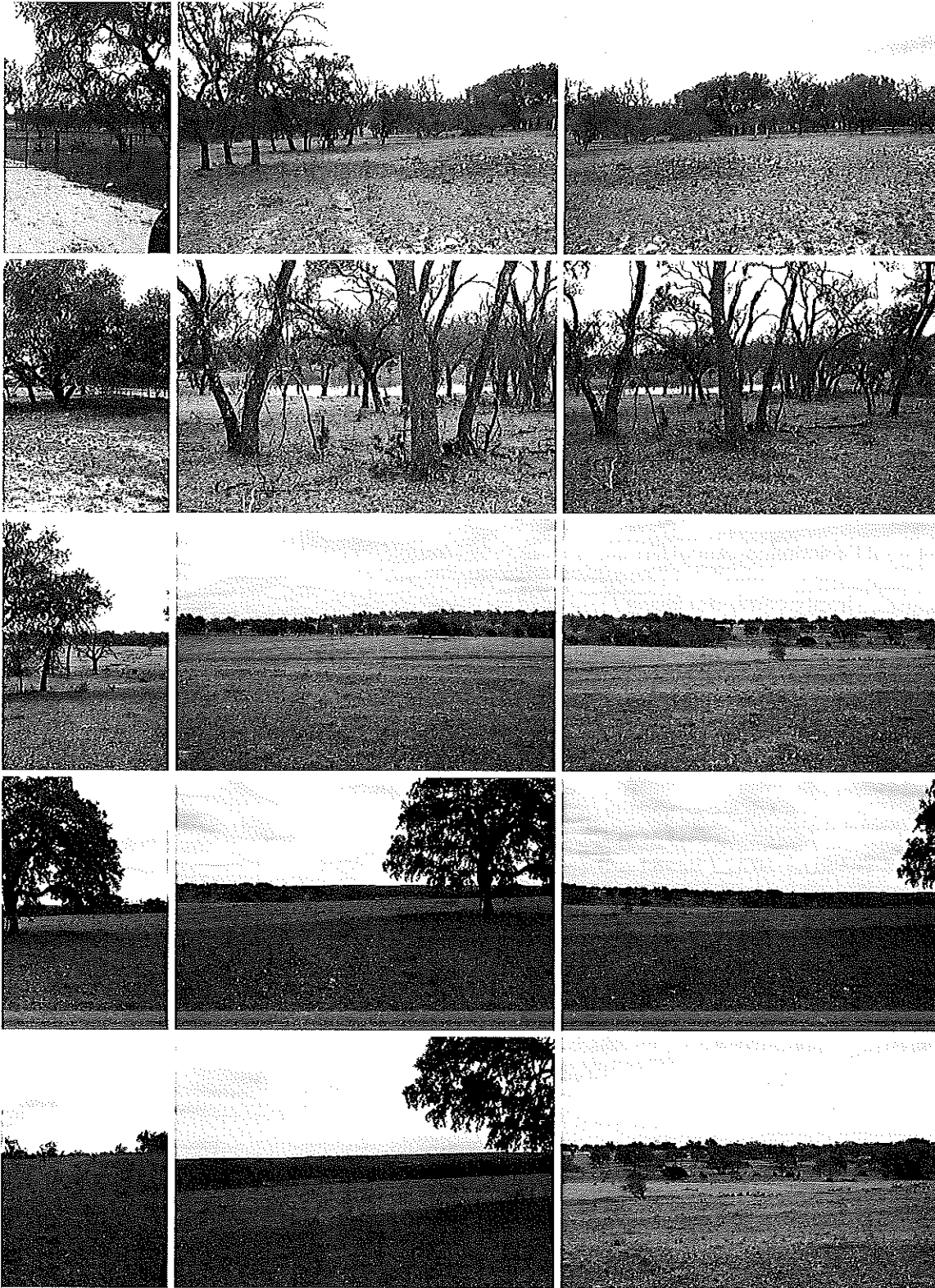
Improvements: None  
Misc Search: Livestock Permitted  
Surface Water: Pond  
Fence: Barbed Wire, Perimeter  
c Available, Phone Available  
County Road

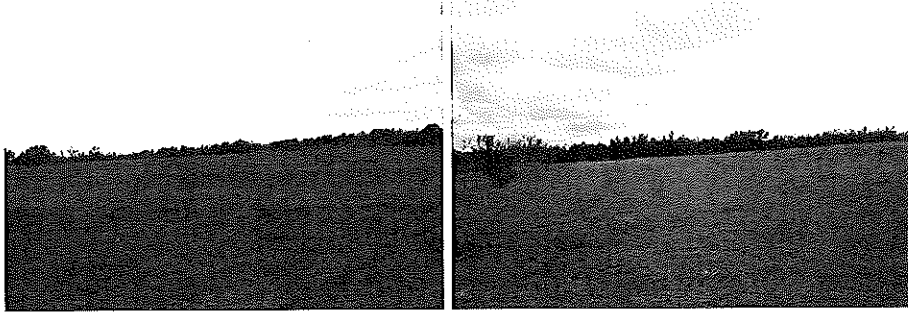
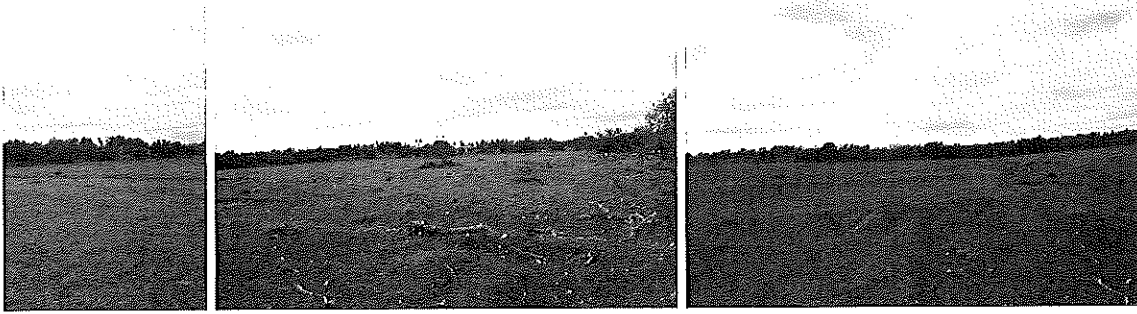
Buyer Agent %: 3% Sub Agency Non-MLS Fee: Buyer Agency Non-MLS Fee: 3%  
Possessn: Closing/Funding Var Rate: No Excl Agy: No  
COUNTY ABSTRACT & TITLE C Attorney: Refer to MLS#:  
TO OLD SAN ANTONIO RD , RT FOR 5 MILES PROPERTY GATE ON RT  
SE TAYLOR, ET AL  
35 ACRES OUT OF ABS A1007 J TATSCH, SURV #2181 & 3.252 ACRES OUT OF ABS  
IV # 296

LISTING AGENT FOR INSTRUCTIONS  
' ACRES ALONG WINE VINEYARDS ALLEY OF 290E 6 MILES FROM TOWN. HAS ABOUT  
WOODED FERTILE FIELD GREAT FOR VINEYARD WITH VIEWS OVERLOOKING  
FRONT 20 ACRES WOODED WITH TANK HAS 63' OF OLD SAN ANTONIO FRONTAGE,  
WOOD ENTRANCE. NICE LIVE OAKS, HAS BEEN IN SAME FAMILY SINCE 1965. PUT WINE  
WOODED ACREAGE OR HOME AND HAVE VINEYARD IN BACK. LISTING AGENT IS  
THE OWNERS(SPOUSE)

Display Address: Yes Allow AVM: No Allow Comments: No

47724





Properties (#:1127)

Location Hwy

Listing Agent: Billy Taylor (#:2)  
Agent Email: [billy@billytaylorproperties.com](mailto:billy@billytaylorproperties.com)  
Contact #: (830) 459-1230  
License Number: 0247724

Information Herein Deemed Reliable but Not Guaranteed  
© Central Hill Country Board of REALTORS © Inc., 2007

MLS #: A77274A

